



Tapeley Gardens

East Hunsbury, Northampton

oriordanbond
SALES & LETTINGS



Tapeley Gardens

East Hunsbury
NN4 0XE

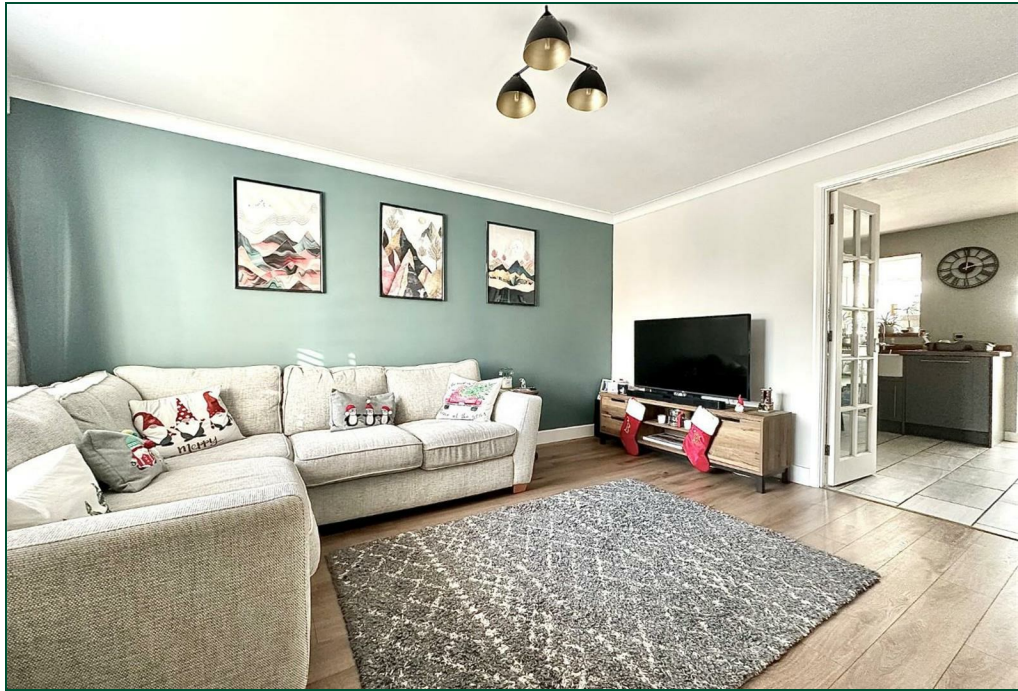
Guide Price
£290,000

An immaculately presented three bedroom semi-detached family home, situated in a cul-de-sac, within the popular area of East Hunsbury. This property offers accommodation over two floors.

Entrance hall with a cloakroom/WC off and a door leading to a generous sitting room, double doors opening to a wonderful kitchen/dining room with fully integrated appliances and a conservatory with an insulated roof and patio doors to the garden. To the first floor is access to the loft space, an airing cupboard, three ample bedrooms with fitted wardrobes to the main bedroom and a contemporary family bathroom. Outside is a block paved driveway and gravelled parking to the front leading to an attached single garage. The rear garden is landscaped and offers a timber decked seating area, an artificial lawn, fish pond, timber shed and timber fencing to enclose. Further benefits include uPVC double glazing and gas radiator heating. (A/1002/S)

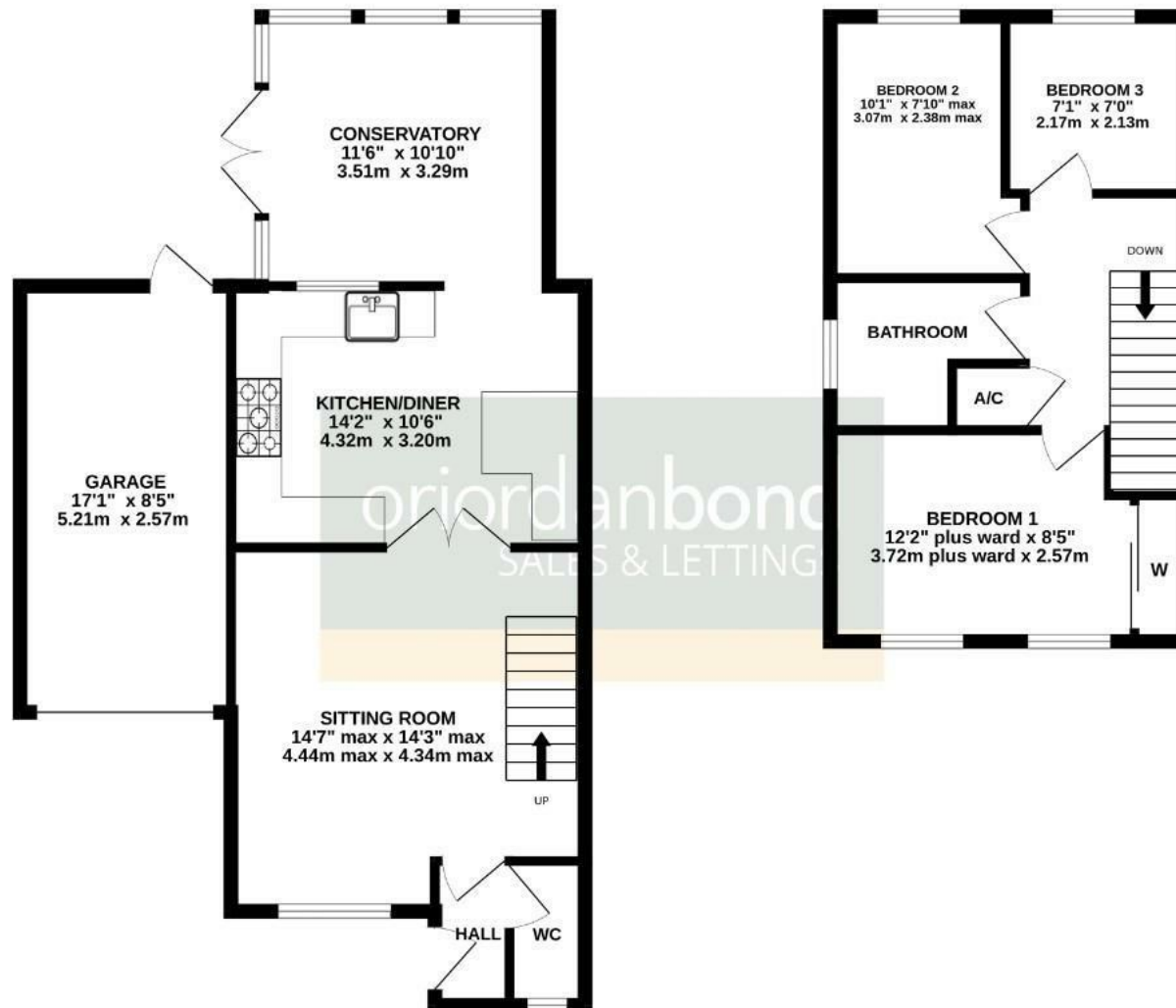
- Immaculate three bedroom semi-detached home
- Kitchen/dining room with integrated appliances
- Conservatory with insulated roof
- Gas radiator heating
- Landscaped rear garden
- Driveway and garage





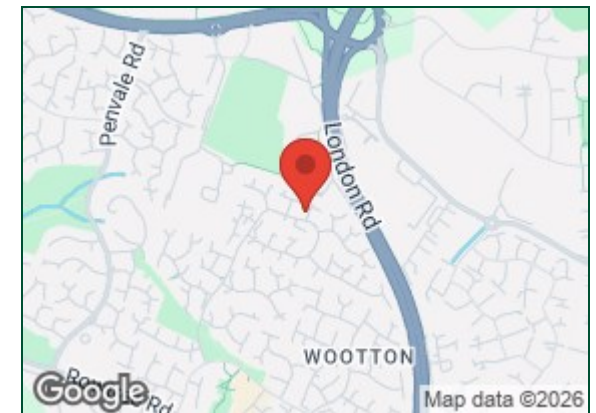
GROUND FLOOR
647 sq.ft. (60.1 sq.m.) approx.

1ST FLOOR
355 sq.ft. (33.0 sq.m.) approx.



TOTAL FLOOR AREA: 1002 sq.ft. (93.1 sq.m.) approx.

Whilst every attempt has been made to ensure the accuracy of the floorplan contained here, measurements of doors, windows, rooms and any other items are approximate and no responsibility is taken for any error, omission or mis-statement. This plan is for illustrative purposes only and should be used as such by any prospective purchaser. The services, systems and appliances shown have not been tested and no guarantee as to their operability or efficiency can be given.
Made with Metropix ©2025



Additional information

- Council Tax Band: C
- Energy Efficiency Rating: D

Viewing

Viewing strictly by appointment – details below

Disclaimer

O'Riordan Bond Estate Agents Limited has not tested apparatus, equipment, fittings or services and so cannot verify they are in working order. The buyer is advised to obtain verification from their solicitor or surveyor.

O'Riordan Bond Hunsbury Sales

01604 706007

hunsbury@oriordanbond.co.uk

